

# Protégé 8

Introducing elegance in a low-heat, high-performance smartscreen controller running Win XPe. Protégé 8 offers a fast processor, flush-mount, acrylic bezel, capacitive touch configurable buttons and more. Protégé is ideal for any web or Win-based application where an in-wall location and touch access is essential. The robust solid state smartscreens enable unwavering stability and performance so make Protégé the backbone of your installations today!



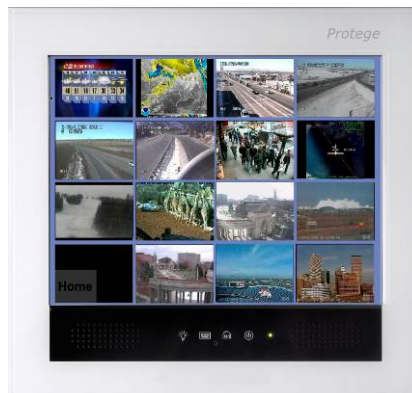
Protégé 15 pictured

## Protégé 8 Features:

- Embedded Geode LX-800 low-heat, high-performance fanless processor
- 8" High Bright **LED backlit** TFT LCD with 800x600 resolution (SVGA) 50,000 hr lamp  
Total power consumption is 2.745W - **21% savings over CCFL, 5x the longevity**
- Touch Panel: 4-wire resistive type
- ACPI 1.0 power saving compliant
- MPEG2 hardware accelerator integrated
- Gigabit Ethernet Controller
- Hard button configuration tool
- 2 speakers and 1 microphone on front bezel.
- Ports 1 x LAN, **2 x RS232**, 2 x USB2.0, 1 x PS/2,
- Power Supply: +13~24V full range DC input.
- Steel back box included
- Auto Power-On feature

## Acrylic Bezel:

- 4 soft-touch sensing buttons on GPIO bus
- LED: RED when off; GREEN when on; ORANGE when any key pressed.
- Microphone / 2 amplified speakers



XP embedded offers flexible configurations – Kiosk mode IE7, DVR viewing, loading Windows-based custom applications, Flash7 plugin, Media Player10, .Net2.0 and much more!

## System

|            |   |
|------------|---|
| Processor  | Geode LX-800 500Mhz low heat, high performance processor            |
| Graphics   | Built-in Geode LX processor high performance 2D graphics controller |
| RAM Memory | DDR 400Mhz 512MB SO-DIMM  |
| DIMM Slots | 1 (max. 1Gigabyte)  |
| USB        | 2 x USB 2.0   |
| Audio      | Realtek ALC203  |
| LAN        | Realtek RTL8110S-32 Gigabit Ethernet controller                     |
| IDE        | Onboard 1 x 44-pin IDE connectors                                   |
| GPIO       | 1 x Digital I/O 4GPI/4GPO   |
| Com Port   | 2 x COM ports; COM1/COM2  |
| Speaker    | 2 channel amplified speakers  |
| Microphone | Capacitor microphone  |

## Display and Touch Screen

|              |                                  |
|--------------|----------------------------------|
| Panel        | 8" SVGA TFT LCD                  |
| Backlight    | White LED, 50,000 hours lifetime |
| Resolution   | 800 x 600                        |
| Brightness   | 250 cd/M <sup>2</sup>            |
| Contrast     | 500:1                            |
| Chipset      | AMD Geode CS5536                 |
| Memory       | Shared system memory up to 64MB  |
| Touch Screen | Resistive 4-wire                 |

## Storage

|                    |   |
|--------------------|---|
| Solid State Memory | Industrial extended temperature 128MB DOM – expandable to 4GB             |
| Memory Card        | Industrial extended temperature Compact Flash Type II – expandable to 4GB |

## External Input/output

|                |   |
|----------------|---|
| USB            | 2 x USB 2.0                               |
| COM            | COM: DB-9 x 2 (3 pin headers; COM1/COM2)  |
| LAN            | 1 x RJ-45 1 GB Ethernet (with indicators) |
| Keyboard/Mouse | Via USB                                   |

## Audio

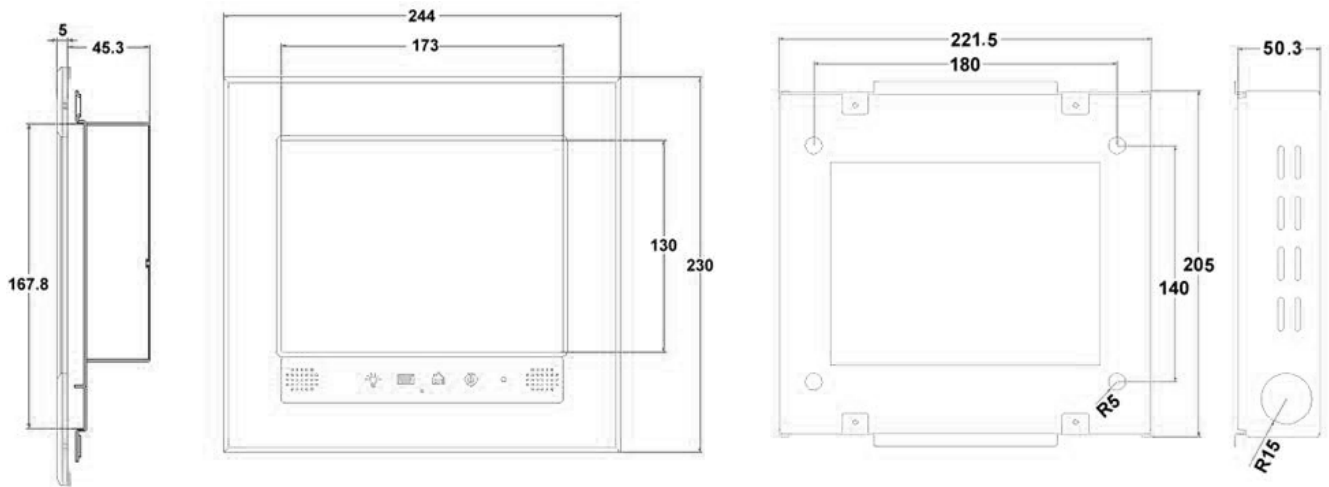
|             |  |
|-------------|--|
| Audio       | Line-in, Line-out MIC mini audio jacks |
| GPIO        | 4GPI/4GPO                              |
| Memory Card | 1 x Compact Flash card slot            |
| Power       | +13~+24VDC                             |
| Reset       | 1 x system reset button                |

## Peripherals

|                         |   |
|-------------------------|---|
| Touch sensitive buttons | 4 x customizable touch buttons, 1 x power switch button |
| Status LED indicator    | 1 x LED indicator (3 colours)                           |

## Mechanical and Environmental

|                         |   |
|-------------------------|---|
| Power Input             | AC 100V/240V, external power supply unit  |
| Power consumption       | Min 7.4 - 12W max   |
| Operating Temperature   | 0~60°C  |
| Front Bezel material    | Clear Acrylic, white finish (custom colours available for large quantities)   |
| Back Box and PC chassis | Mild steel  |
| Relative Humidity       | 10%~90%, non-condensing   |
| Weight                  | 4 Kg (including packaging)  |
| Dimensions              | Front bezel: 244mm w x 230mm h x 5 mm d<br>PC chassis: 230mm w x 204.4mm h x 45.3 mm d<br>Back box: 221.5 mm w x 205 mm h x 50.3 mm d |



© 2009 Borg Displays, Inc. Protégé and Borg logos are trademarks or registered trademarks of Borg Displays, Inc. All other names are properties of their respective owners. Specifications are subject to change without notice. BG932/56